

# Laufenn

Journey in Style

A Brand by Hankook Tire

**Z**  
Z FIT EQ



**Laufenn**  
Journey in Style

A brand by Hankook Tire  
**OFFICIAL PARTNER**



When the Blue that represents rational value and the Red that represents emotional value meet, the Violet of Laufenn is born. Laufenn provides smart consumers both practical value and satisfaction.



Laufenn ensures an exceptional driving experience through optimized performance – In any weather or in any season, rain or snow, summer or winter.

Laufenn provides the performance you need over a wide range of conditions – in your everyday life, under any road conditions, on or off-road.

### Confident

The ability Laufenn provides is rooted in its uncompromising commitment to quality. When you go to work or head out to meet your friends... When you go on a trip or venture out to a new place... Laufenn is there with you everyday providing optimized performance and confidence.

### Simple

Laufenn is Simple – with no add-ons and nothing to spoil your driving experience. Committed to the basics, Laufenn offers a pure driving experience tailored to your needs.

### Open-minded

Laufenn refuses to accept an one-size-fits-all attitude. You know value when you see it and are determined to embrace new choices. Making Laufenn your choice is transforming your own value into a new trend.

### Sensible

Laufenn understands your refined taste. You have an extraordinary eye for quality – all at a glance. Your choices are always solid. Laufenn expresses your excellent style and represents your fashionable personality.



***Z FIT EQ***



# Premium Sport Performance Summer Tire



Dry



Wet



Handling



Braking

The Z FIT EQ is a luxury premium tire that provides outstanding wet & dry performance.



## FEATURES

### Premium Sport Performance Tire with greatly improved wet braking and handling

- Optimised dry and wet roads
- Minimize the threat of hydroplaning on straight roads and during cornering
- Ensure running stability

### **Z FIT EQ**

**Speed Symbol :** Y / (Y)

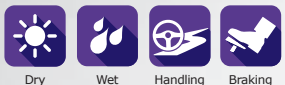
**S.W. :** 205~305

**Series :** 25~50

**Inch :** 17~22

**EU Label :** E / A / W2

# Handling & Braking



Outstanding steering control and minimize stopping distance on both dry and wet roads.

## Tread Pattern

Asymmetrical Design / A ribbed block maximizes longitudinal stiffness.

## Side / Structure

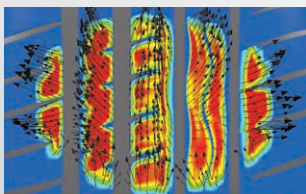
High-density reinforced nylon belts and steel belts maintain optimum footprint during cornering.

## Compound

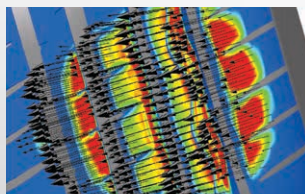
A newly developed highly dispersible silica compound is applied.

## Exceptional Handling Performance Through

## Asymmetrical Design and Optimum Pattern Design



Traction force during acceleration

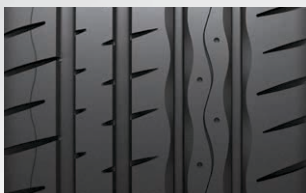


Lateral force at slip angle 12°

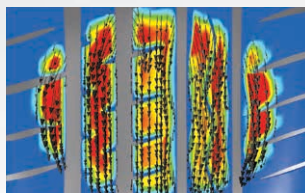
An asymmetrical design combined with high-stiffness rib pattern maximizes handling performance on dry roads. Optimum pattern design maximizes traction and lateral force during cornering.

## Improve Brake Force by Appropriately Combining the Longitudinal

## Stiffness of the Pattern Block with That of The Footprint



Continuous rib patterns improve longitudinal stiffness.



Simulation results are applied to achieve the optimum pattern and structure design.





# High-Speed Performance



Safety

Preventing tire distortion at high speed under high temperature.

## Solid Design for High-Speed Operation

High-density nylon belts prevent pressure from being concentrated on one side by distributing pressure equally when running at high speed. A new-concept structure minimizes elongation of tread contact at high speed.

## Stabilized Aspects for High-Speed Operation

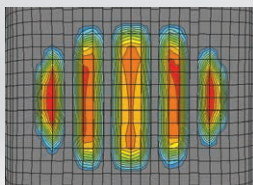
A new multiple-tread radius ensures balanced surface contact pressure and prevents distortion at high speed.

## High-speed Predictive Models

Profile and structure design ensures optimum surface contact pressure and surface contact shape.



Tire section and profile simulation



Footprint pressure distribution and shape  
(0~250km/h at 430kg\_2.3bar)

## Minimize Distortion at High Speed

Optimize distortion by reducing tread contact elongation at high speed while minimizing the difference in tread contact elongation in the center and on the shoulders.



# Aquaplaning



Wet

Minimize the threat of hydroplaning on straight roads and during cornering.

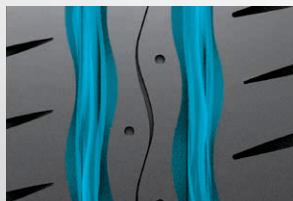
## Tread Pattern

A wide longitudinal groove is applied on the outer part of the tread.

## Footprint

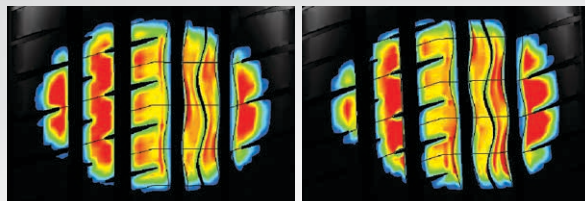
Footprint shape remains optimized when going straight ahead and during cornering.

## 3D Wave & Straight Groove



The outperforms by applying a wide straight groove on the outer edge and by maintaining the optimal footprint shape.

## Maintaining the Optimal Footprint



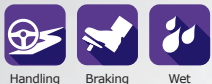
Slip Angle = 0°

Slip Angle = 3°





# Compound

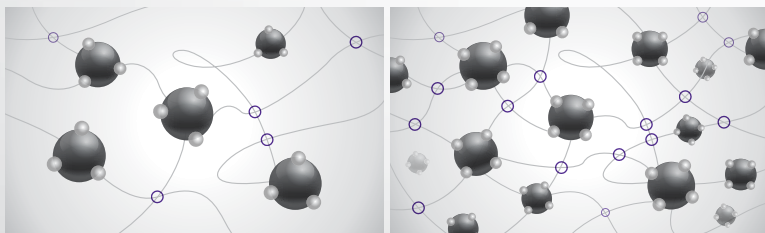


Highly dispersible silica compounding and a new mixing process are applied.

## Improves Compound Hysteresis Feature

Much better filler dispersion enhances traction performance.

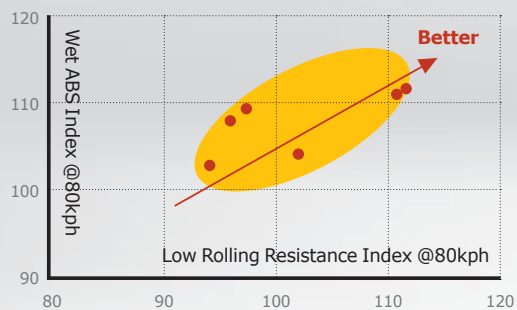
● Silica aggregate   ● Silica-rubber coupling   ✕ Matrix X-link(Rubber-Rubber network)



Conventional

Advanced Compound

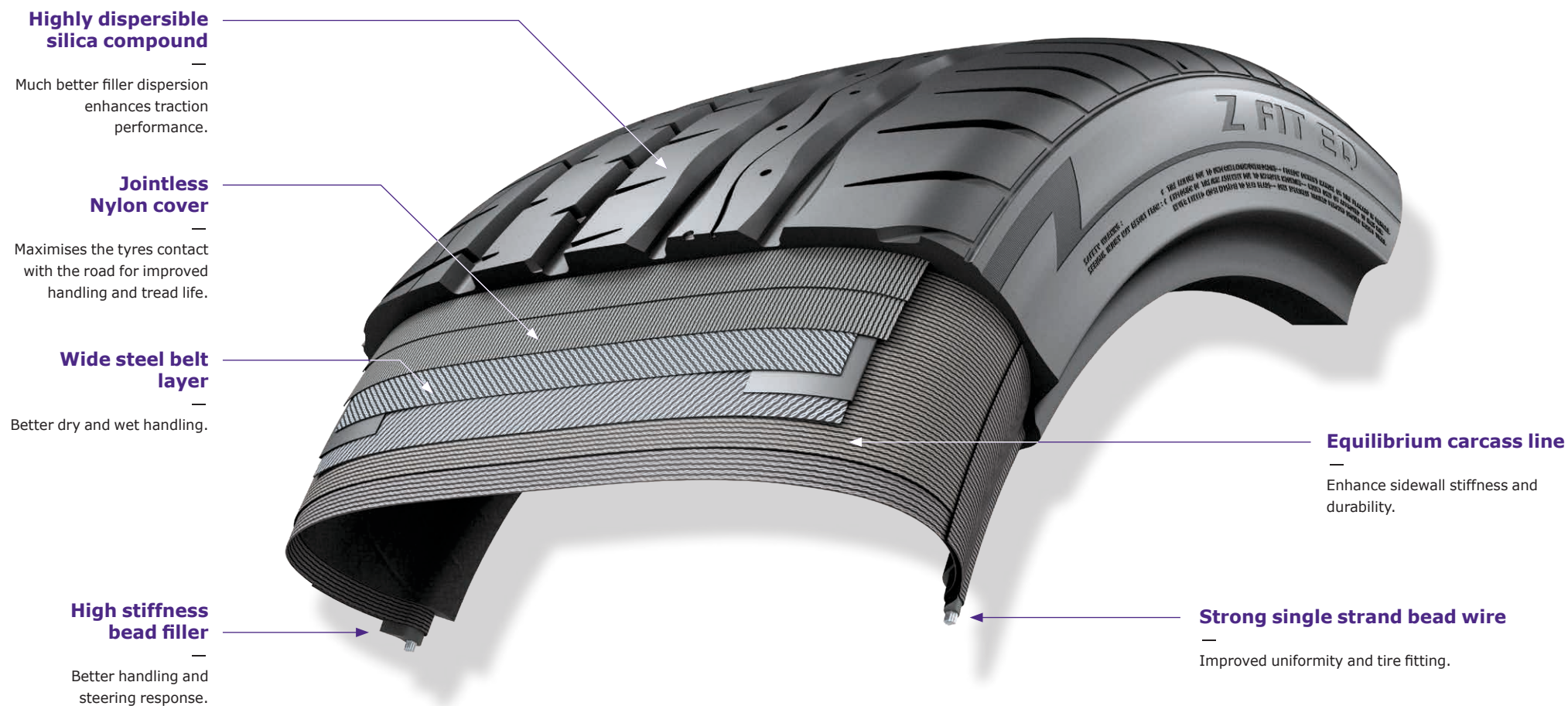
## Advanced Silica Compound Technology





# TYRE STRUCTURE

The Z FIT EQ adopts new technology for sport driving, engineered for high-end performance on dry and wet road.





# AVAILABLE SIZES

## 25 Series

Inch	Size	LI & SS	Label		
			RR	Wet	PBN(dB)
20	295/25ZR20(Y) XL	(95Y)	E	A	75
20	285/25ZR20Y XL	93Y	E	A	75

## 30 Series

Inch	Size	LI & SS	Label		
			RR	Wet	PBN(dB)
22	265/30ZR22Y XL	97Y	E	A	73
20	285/30ZR20Y XL	99Y	E	A	75
20	255/30ZR20Y XL	92Y	E	A	73
20	245/30ZR20(Y) XL	(90Y)	E	A	72
20	235/30ZR20(Y) XL	(88Y)	E	A	72
19	305/30ZR19(Y) XL	(102Y)	E	A	75
19	295/30ZR19(Y) XL	(100Y)	E	A	75
19	285/30ZR19Y	94Y	E	A	74
19	275/30ZR19(Y) XL	(96Y)	E	A	73
19	265/30ZR19(Y) XL	(93Y)	E	A	73
19	255/30ZR19Y XL	91Y	E	A	73
19	245/30ZR19Y XL	89Y	E	A	72

## 35 Series

Inch	Size	LI & SS	Label		
			RR	Wet	PBN(dB)
20	245/35ZR20Y XL	95Y	E	A	72
19	285/35ZR19Y	99Y	E	A	74
19	275/35ZR19Y XL	100Y	E	A	73
19	255/35ZR19Y XL	96Y	E	A	73
19	245/35ZR19Y XL	93Y	E	A	72
19	235/35ZR19(Y) XL	(91Y)	E	A	72
19	225/35ZR19Y XL	88Y	E	A	72
19	215/35ZR19Y XL	85Y	E	A	72
18	265/35ZR18Y XL	97Y	E	A	73
18	255/35ZR18Y XL	94Y	E	A	73
18	245/35ZR18Y XL	92Y	E	A	72
18	225/35ZR18Y XL	87Y	E	A	72

## 40 Series

Inch	Size	LI & SS	Label		
			RR	Wet	PBN(dB)
19	275/40ZR19Y XL	105Y	E	A	73
19	255/40ZR19Y XL	100Y	E	A	73
19	245/40ZR19Y XL	98Y	E	A	72
19	225/40ZR19Y XL	93Y	E	A	72
18	275/40ZR18Y XL	103Y	E	A	73
18	235/40ZR18(Y) XL	(95Y)	E	A	72
18	225/40ZR18Y XL	92Y	E	A	72
18	205/40ZR18Y XL	86Y	E	A	72
17	245/40ZR17Y XL	95Y	E	A	72

## 45 Series

Inch	Size	LI & SS	Label		
			RR	Wet	PBN(dB)
19	275/45ZR19Y XL	108Y	E	A	73
19	245/45ZR19Y XL	102Y	E	A	72
18	245/45ZR18Y XL	100Y	E	A	72
18	225/45ZR18Y XL	95Y	E	A	72
18	215/45ZR18Y	89Y	E	A	71
17	245/45ZR17Y XL	99Y	E	A	72
17	235/45ZR17Y XL	97Y	E	A	72
17	215/45ZR17Y XL	91Y	E	A	72

## 50 Series

Inch	Size	LI & SS	Label		
			RR	Wet	PBN(dB)
17	205/50ZR17Y XL	93Y	E	A	72



***Laufenn***

Siemensstraße 5A, 63263 Neu-Isenburg, Germany  
Tel. 49-6102-8149-0 / Fax. 49-6102-8149-100  
[www.laufenn.com](http://www.laufenn.com)